

Winter Levels of Service

Winter Service Category "A-1"

(4 Lane Arterials)

Traffic Count > 4000



Objective: Bare driving lanes within 24 hours after end of storm

Winter Service Category "A-2"

(Remaining Arterials and high volume collectors)

Traffic Count > 2000

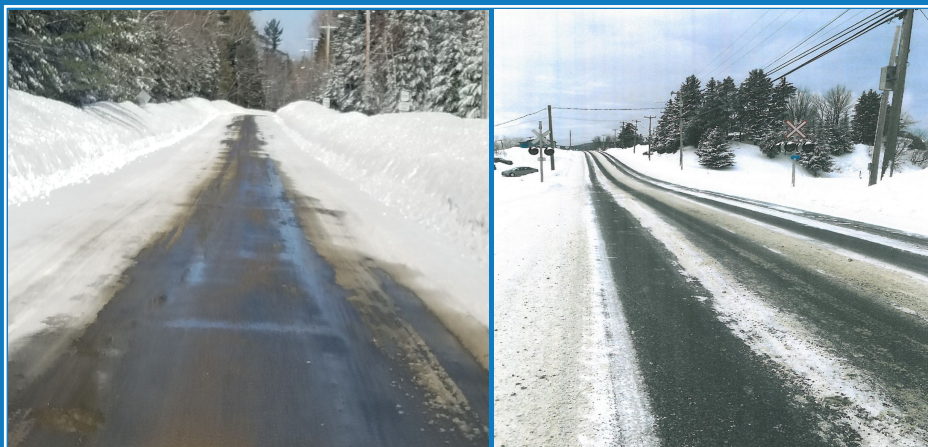


Objective: Bare driving lanes within 24 hours after end of storm

Winter Service Category "B"

(Medium volume Collectors & selected Locals)

Traffic Count = 500 to 2000



Objective: Bare center strip or bare wheel path within 48 hours after end of storm

Winter Service Category "C"

(Low Volume Collectors, most local highways)

Traffic Count < 500

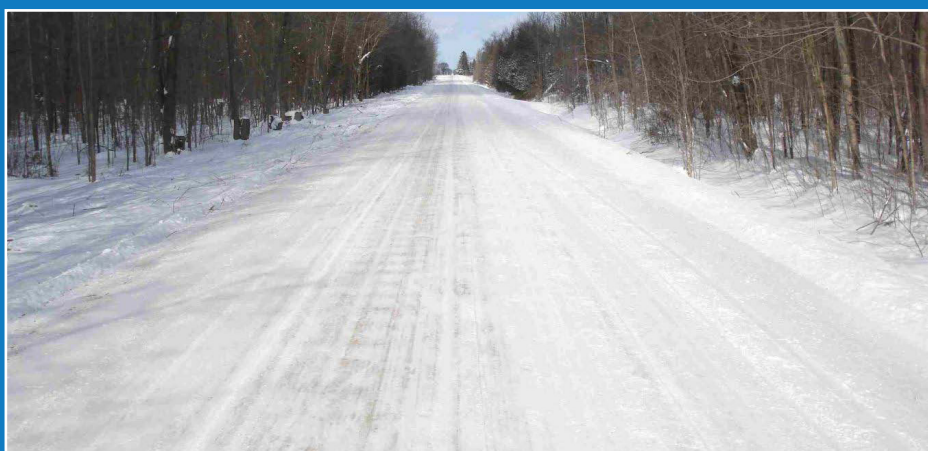


Objective: Snow packed condition with hills, curves and intersections treated with sand

Winter Service Category "D"

(Local Highways)

Traffic Count < 100



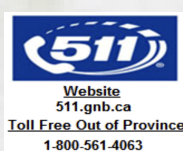
Objective: Snow packed condition. May not receive service for extended periods of time

- DTI operates and maintains approximately 18,000 kms of provincial highway and road ways.
- DTI monitors roads during winter storms, with plowing operations typically running from 5 a.m. to 11 p.m. on most provincial roads. From 11 p.m. to 5 a.m., services are typically reduced to emergency only response. DTI is available to respond to emergencies around the clock.
- **Levels of service may be reduced due to the following:**
 - Length and severity of storm
 - Limited visibility for operators, compromising the safety of maintenance personnel and/or the traveling public
 - Equipment, material and staff availability
 - Winds causing drifting
 - Freezing rain or sleet
 - Road surface temperatures (less than -10C) which limit the effectiveness of de-icing chemicals (i.e. salt)
 - Recovery time for operators during extended winter storm conditions

REMINDER - Give plowing equipment space. Keep back 30m so they can see you.



@Gov_NB
@Gouv_NB
@NewBrunswick511



Download our 511 NB mobile app on the Apple App Store and Google Play Store

