

Women's Issues Branch
Violence Prevention Initiatives

Transition Houses

2010-2011

Transition Houses
2010 - 2011

Province of New Brunswick
P.O. Box 6000
Fredericton NB E3B 5H1
CANADA

ISBN 978-1-4605-0117-7

Transition Houses

2010-2011

New Brunswick has 13 Transition Houses for women, with or without children, fleeing relationship violence. The goals of Transition Houses are to:

- provide shelter and crisis intervention for women, with or without children, who are victims of relationship violence and abuse; and
- inform the public and promote awareness of the mandate and objectives of Transition House.

Services include:

- temporary lodging;
- crisis line 24 hours a day; and
- referrals in the following areas: security/safety, legal, financial, mental/physical health, housing and knowledge on violence.

Transition Houses

Name	Location	# of beds
Crossroads for Women/Carrefour pour femmes Inc.	Moncton	17
Maison Sérénité House	Sainte-Anne de Kent	10
Fundy Region Transition House Inc.	St.-Stephen	15
Sussex Vale Transition House	Sussex	9
Hestia House	Saint John	24
Women in Transition Inc.	Fredericton	19
Gignoo Transition House	Fredericton	15
Sanctuary House	Woodstock	10
L'Escale Madavic Inc.	Edmundston	10
Maison Notre Dame	Campbellton	9
Maison de Passage Home Inc.	Bathurst	10
Miramichi Emergency Center for Women	Miramichi	12
L'Accueil Sainte-Famille Inc.	Tracadie-Sheila	10

Total number of beds: 170

Transition Houses

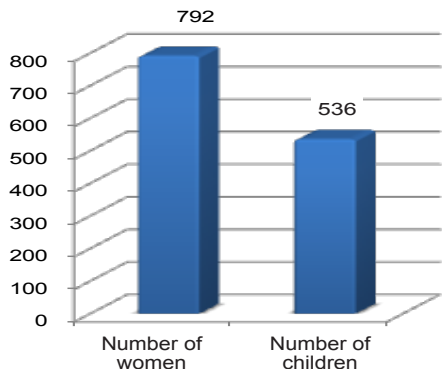
Interesting Facts for 2010-2011

- ✓ In 2010-2011, a total of 792 women and 536 children sought refuge at one of the 13 Transition Houses.
- ✓ An estimated 44% of the women using Transition House services were on income assistance, while approximately 18% worked full time or part time.
- ✓ The majority of women using Transition House services are non-aboriginal New Brunswickers. Approximately half the women come from an urban community (51%) and approximately 37% come from rural communities.
- ✓ The majority of women who access Transition House services are between 21-45 years of age (approximately 67%).
- ✓ Most children benefitting from Transition House residential services are under 11 years of age (approximately 76%). An estimated 52% were under 5 years of age and approximately 19% were between the ages of 11-15.
- ✓ The majority of women (approximately 81%) are at the Transition House because they have experienced abuse at the hands of their ex-partner.
- ✓ Of the women counted in residence at the Transition Houses over the course of 2010-2011, an estimated 90% reported being emotionally or psychologically abused, while approximately 55% of women reported being physically abused.
- ✓ Of all women who accessed residential services at the Transition House, an estimated 57% reported experiencing abuse in a previous relationship, and an estimated 54% reported experiencing violence as a child.
- ✓ For approximately 36% of women, it was their first separation from an abusive partner and the second for approximately 24%.
- ✓ For approximately 47% of the women residents, it was their first time at the Transition House. An estimated 23% were there for the second time, and approximately 27% have been to a Transition House 3 times or more.
- ✓ The average length of stay is two weeks (approximately 38%) and approximately 36% of women stayed for 4 weeks or more.
- ✓ Although an estimated 10% of women were able to return to their home because their partner left, many needed to find new accommodations. Some got their own housing (approximately 22%), while an estimated 23% stayed with relatives and friends.
- ✓ Most women are referred to a variety of services. The most common referrals include:
 - Social Services - approximately 26%
 - Income Support - approximately 29%
 - Public/Subsidized Housing- approximately 27%

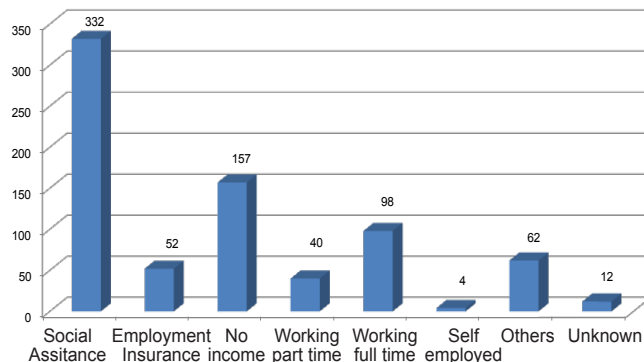
Note: All Transition Houses provide monthly statistics to the Department of Social Development electronically. This information is then compiled and analyzed by the Department of Social Development.

Transition Houses numbers, as reported by the 13 Transition Houses in year

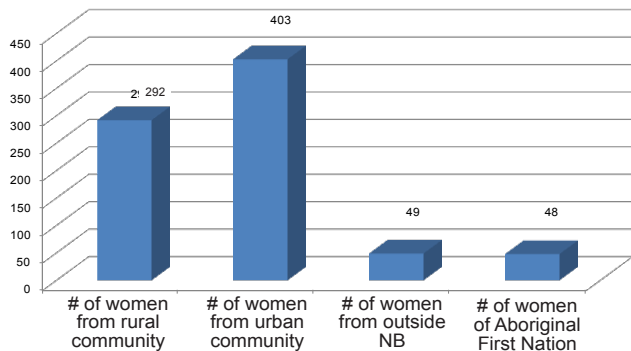
Number recorded



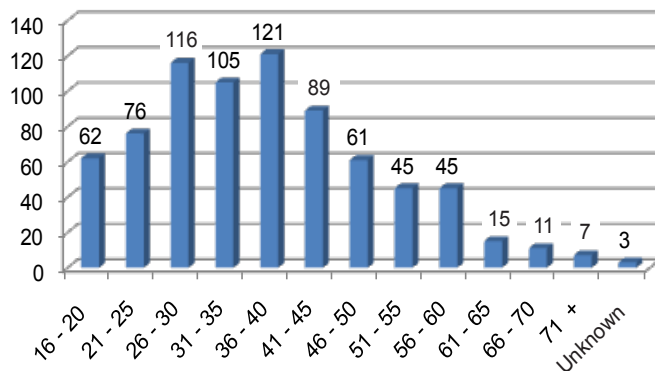
Number of women per primary source of income



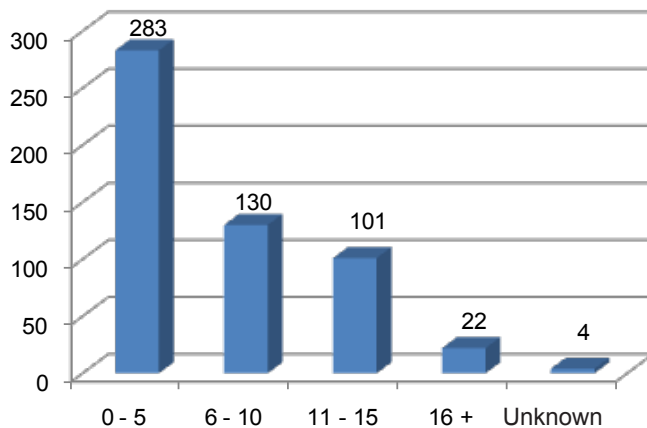
Residential Clients - Identification



Number of women by age group

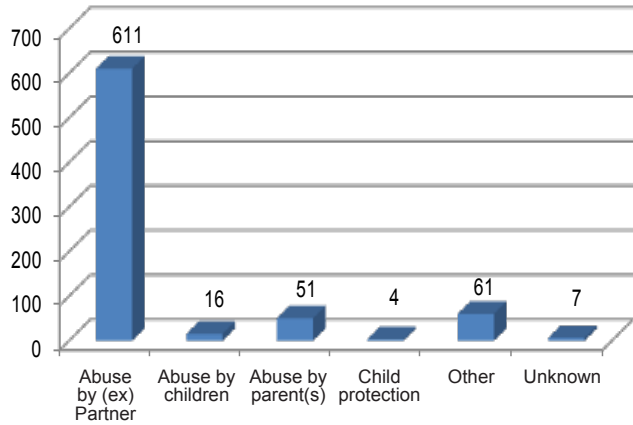


Number of children by age group

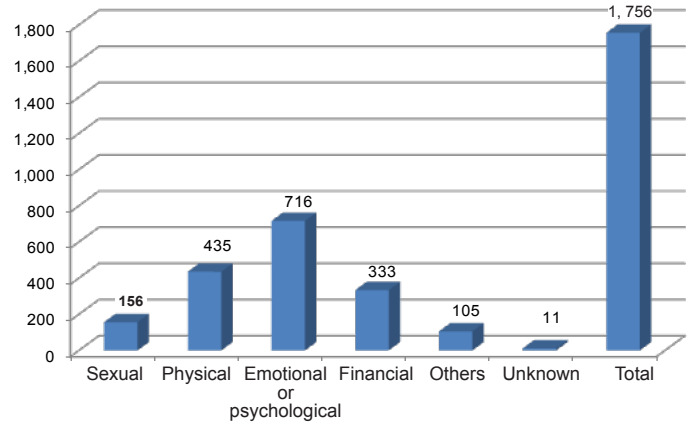


Transition Houses numbers, as reported by the 13 Transition Houses in year

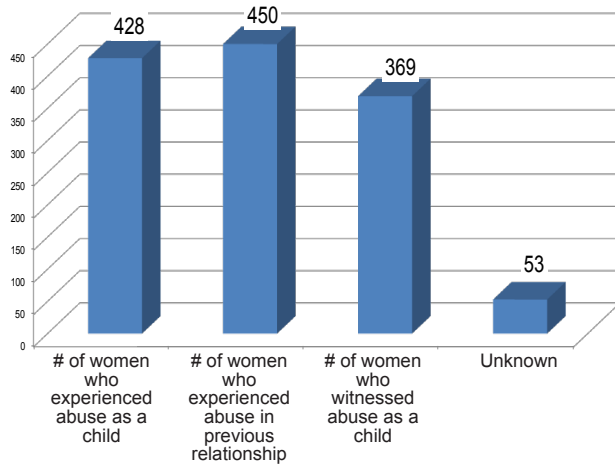
Number of women who were in shelter because of:



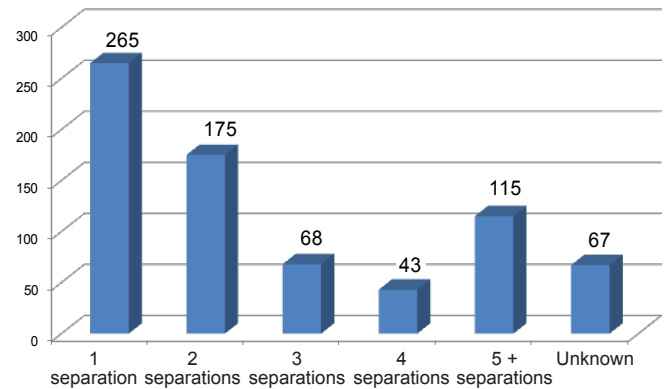
Number of women by type of abuse



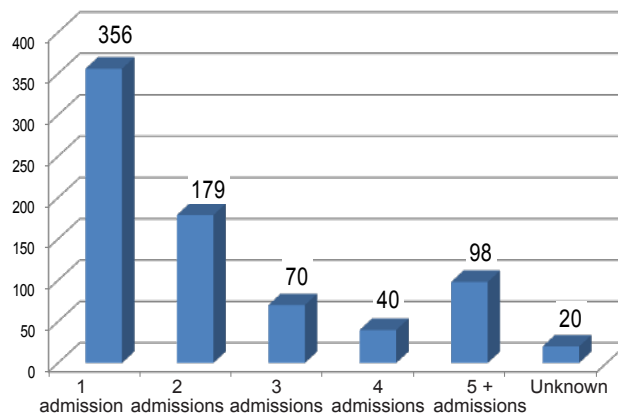
Abuse history



Number of separation(s) (includes present)

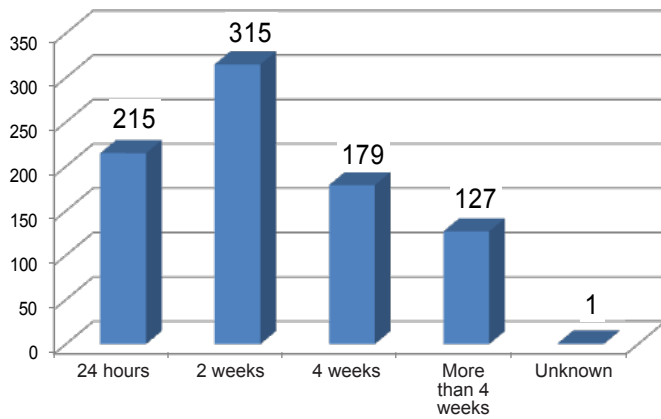


Number of admissions to any shelter

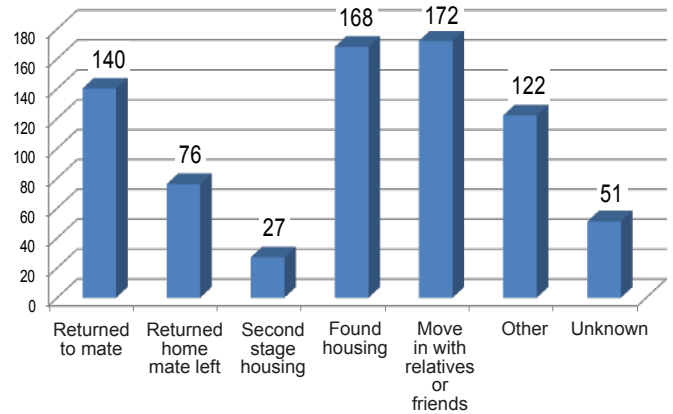


Transition Houses numbers, as reported by the 13 Transition Houses in year

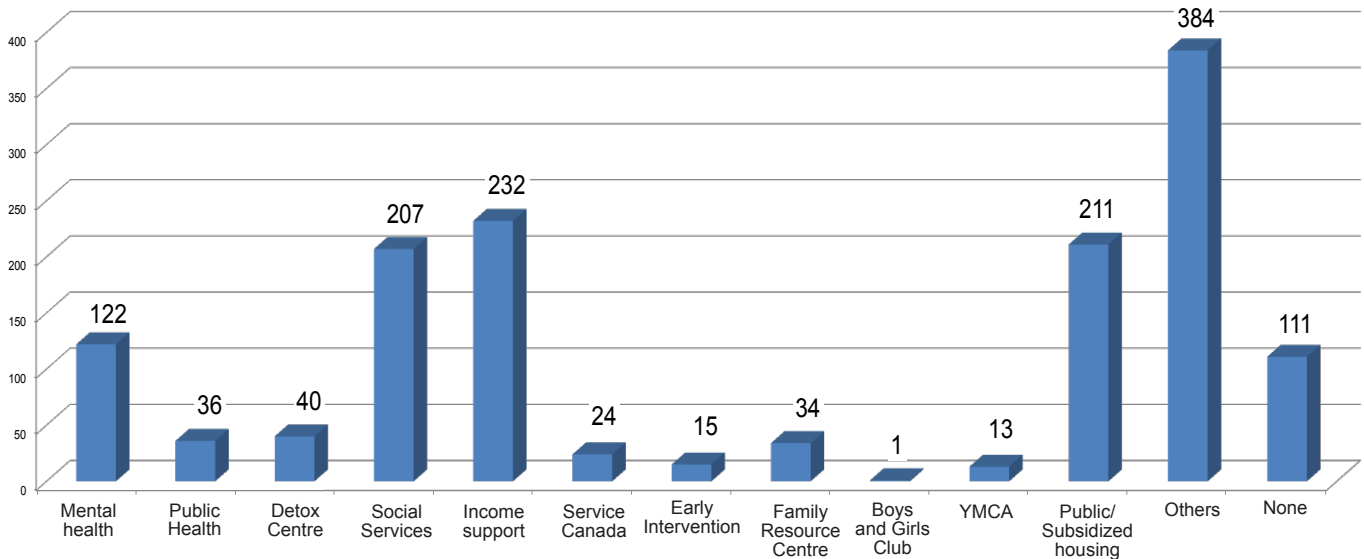
Number of women by length of stay



Destination when leaving



Referrals to:



Note: All Transition Houses provide monthly statistics to Department of Social Development electronically. This information is then compiled and analyzed by the Department of Social Development. Most of the percentages calculated are based on what was reported per questions.