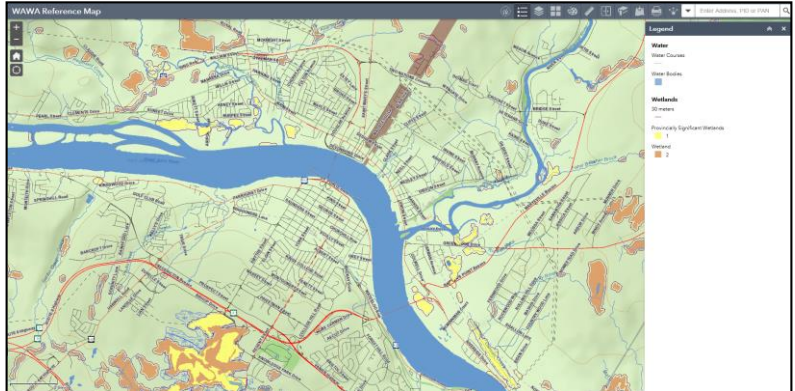


Watercourse and Wetland Identification

Check the Map

Search your address or PID number on the [WAWA Reference Map](#) to see if any mapped watercourses or wetlands appear on your property.



Check the Definitions



Watercourse

A feature in which the primary function is the conveyance or containment of water, which includes: the bed, banks and sides of any incised channel greater than 0.5 metres in width that displays a rock or soil bed; water/flow does not have to be continuous and may be absent during any time of year; or a natural or man-made basin.



Wetland

Land that has the water table at, near, or above the land's surface, or which is saturated, for a long enough period to promote wetland or aquatic processes as indicated by hydric soils, hydrophytic vegetation, and various kinds of biological activities adapted to the wet environment



Walk the Property to Check for Unmapped Wetland Features

- Areas where water is likely to collect: low spots or depressions, near a stream or river that floods, in heavy/clay soils, highly organic soils, smells like rotten eggs.
- Signs of flooding near the surface: the water table is close to the surface water seeps when a hole is dug, no shrubs or trees are present.
- Common wetland plants: peat moss, sedges, cattails, ferns, black spruce, cedar, or alders.



Ask for Advice

If you are still unsure whether a wetland or watercourse is present, please contact the Department of Environment and Local Government (wawa@gnb.ca or 506-457-4850)