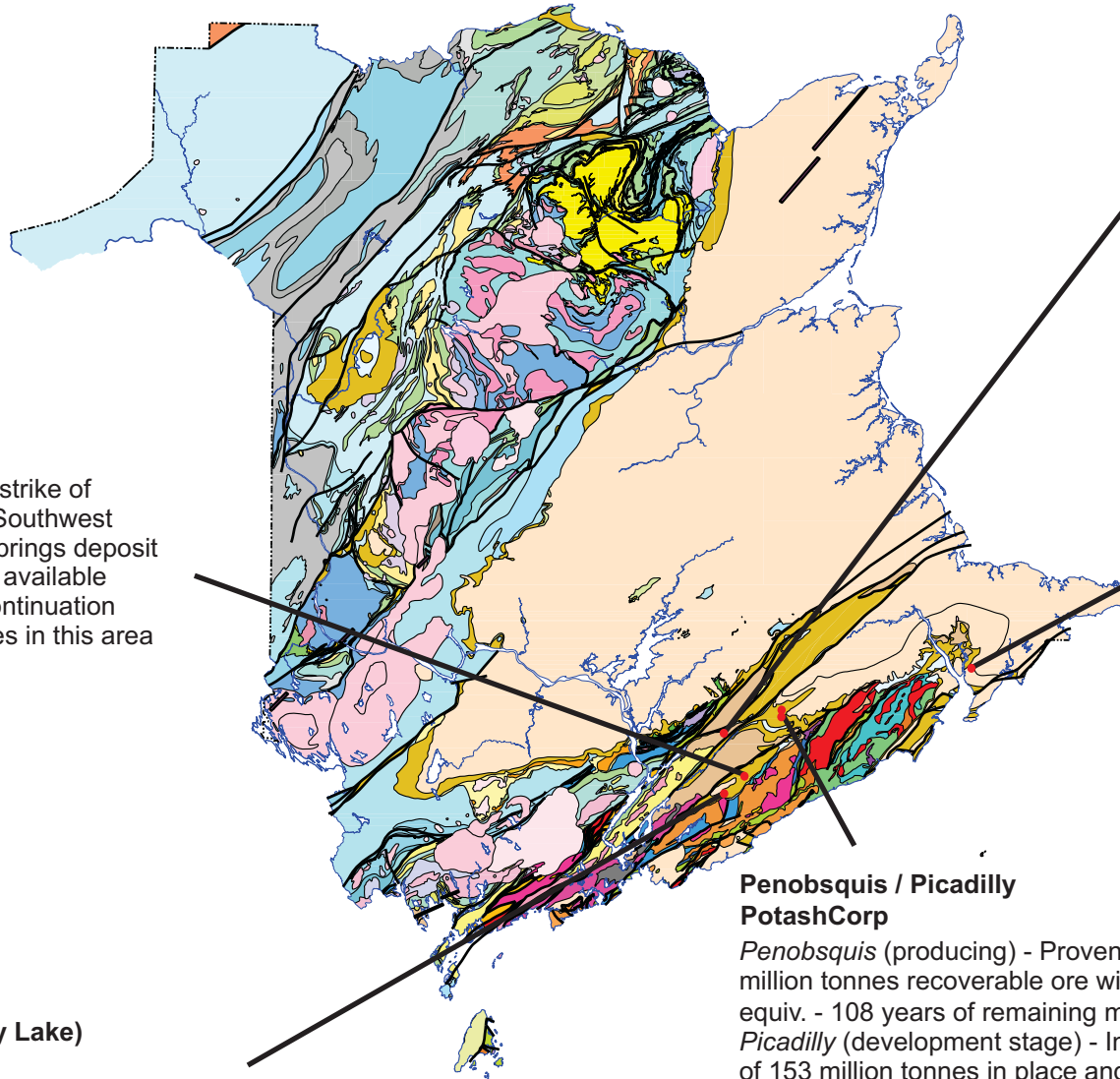


# Potash and Salt Potasse et sel gemme



## Marchbank Syncline

Potash potential along strike of former Potacan mine. Southwest extension of the Salt Springs deposit is not clearly defined & available gravity data suggest continuation of subsurface evaporites in this area

## Salt Springs (Cassidy Lake) PotashCorp

Former Potacan mine site currently held by PotashCorp Cassidy Lake Division ~12 million tonnes of potash ore mined during 12 years of operation in the 1980's-1990's.

## Penobsquis / Picadilly PotashCorp

*Penobsquis* (producing) - Proven Mineral Reserves of 188 million tonnes recoverable ore with avg. grade 24.6% K<sub>2</sub>O equiv. - 108 years of remaining mine life.

*Picadilly* (development stage) - Indicated Mineral Resource of 153 million tonnes in place and Inferred Mineral Resource of 319 million tonnes in place at 24.6 % K<sub>2</sub>O. Construction expected to be completed in 2013.

## Millstream Atlantic Potash Corp

In December 2011 Atlantic Potash Corp entered into a 3 year agreement with the province to explore and develop the Millstream deposit. The deposit has an in situ indicated sylvinitic resource of 256 million tonnes avg. 20.6 % K<sub>2</sub>O and carnallite resource estimate in excess of 100 million tonnes.

## Dorchester Salt

Thick sections of Windsor salt interested in 3 boreholes. Potash not encountered but several untested regional gravity and seismic features in the area.