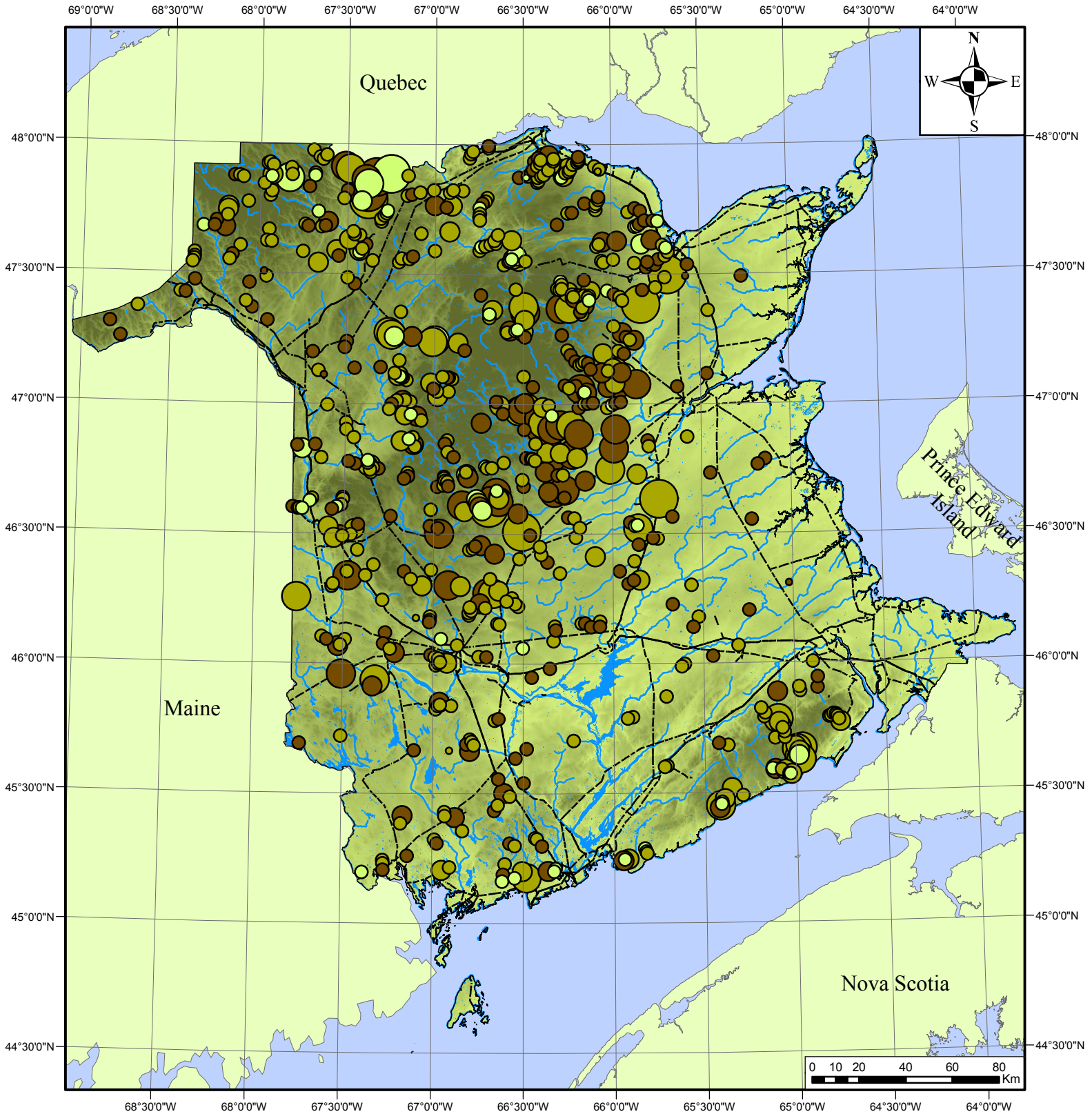


Conventional Hydroelectric Reservoir



Potential Power Capacity (kW)

- 0 - 100
- 100 - 500
- 500 - 1,000
- 1,000 - 3,000
- 3,000 - 15,000

Legend

- | | | |
|----------------------|----------------------------|--------------------|
| Elevation (m) | Penstock Length (m) | |
| 810 | 0 - 1,000 | Major Rivers |
| 0 | 1,001 - 2,000 | Transmission Lines |
| | 2,001 - 3,000 | |

Projection : NAD 1983 CSRS98 New Brunswick
Double stereographic

Jean-François Cyr, Mathieu Landry and Yves Gagnon
K.C. Irving Chair in Sustainable Development
Université de Moncton
web.umoncton.ca/chaired
March 2011

This map describes the small hydroelectric resources of New Brunswick. Created by the Université de Moncton, this map was based on mean annual streamflow and digital elevation model to determine the power potential. Although it is believed to represent an accurate overall picture of the small hydroelectric resource, estimates at any location should be confirmed by measurements. The authors do not take responsibility for the use of the present map.

