



---

# COVID-19 Report

**REPORTING PERIOD:  
OCTOBER 2 TO OCTOBER 8, 2022 (WEEK 40)**

**October 14**  
Department of Health





## SUMMARY

<b>n = 631</b> New PCR confirmed cases <sup>1</sup>	<b>n = 3</b> Deaths <sup>1</sup>	<b>n = 77272</b> Cases are resolved	<b>n = 843</b> Cases are active <sup>2</sup>
--	-------------------------------------	--	---

<b>n = 27</b> Current hospitalizations <sup>2,3</sup> (non-ICU and ICU)	<b>n = 3</b> Current ICU <sup>2,3</sup>	<b>n = 25</b> Seven-day moving average (hospitalizations)	<b>n = 91</b> Seven-day moving average (cases)
---	--	---	--

## HIGHLIGHTS

- The number of PCR confirmed cases has increased this week compared to last week.
- The number of hospital admissions for COVID-19 has increased this week (27) compared to last week (19).
- The number of active hospitalizations has increased this week (27) compared to last week (19).
- The number of deaths has decreased this week (3) compared to last week (5).
- The highest portion of hospitalizations for COVID-19 is among individuals aged 70-89.
- Individuals that are unprotected by vaccine continue to have the highest rate of COVID-19 ICU admissions.
- Amongst the most recent random sample sequenced for COVID-19:
  - 0% of samples are BA.1.
  - 0% of samples are BA.2.
  - 0% of samples are BA.3.
  - 10% of samples are BA.4.
  - 90% of samples are BA.5.

---

<sup>1</sup> Reported during Sunday, October 2 to Saturday, October 8, 2022 (week 40).

<sup>2</sup> Status as of 11:59pm on Saturday, October 8, 2022.

<sup>3</sup> Confirmed cases hospitalized for COVID-19.

## COVID-19 LABORATORY DATA<sup>4</sup>

**Table 1:** The total number of PCR (polymerase chain reaction) and positive self-reported POCT (point of care) tests performed for COVID-19 by zone.

Zone	PCR Tests (Change)	Positive POCT (Change)
Zone 1	335230 (+1083)	25483 (+173)
Zone 2	163872 (+1028)	18701 (+117)
Zone 3	177555 (+1374)	18906 (+163)
Zone 4	85735 (+401)	4288 (+27)
Zone 5	47977 (+248)	1876 (+5)
Zone 6	70955 (+503)	7158 (+25)
Zone 7	43346 (+464)	3672 (+20)
<b>Total</b>	<b>924670 (+5101)</b>	<b>80084 (+530)</b>

**Table 2:** Total number of PCR confirmed COVID-19 cases.

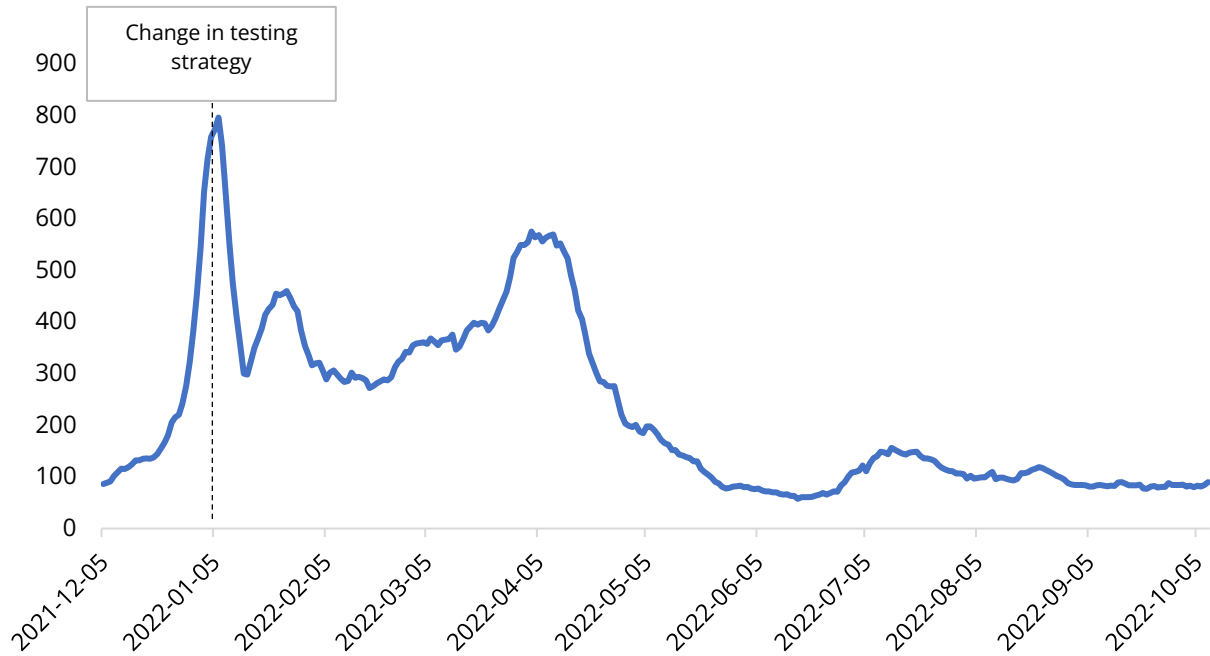
Zone	Current reporting week	Cumulative confirmed	Number of resolved	Number of deceased	Number of active <sup>5</sup>	Seven-day moving average
Zone 1	153	24600	24213	164	223	22
Zone 2	165	17479	17181	101	197	24
Zone 3	139	15061	14767	94	200	20
Zone 4	63	6373	6221	77	75	9
Zone 5	22	3105	3046	34	25	3
Zone 6	57	7401	7261	66	74	8
Zone 7	32	4668	4583	36	49	5
<b>Total</b>	<b>631</b>	<b>78687</b>	<b>77272</b>	<b>572</b>	<b>843</b>	<b>91</b>

<sup>4</sup> Source: George Dumont Laboratory extracts and self-reported POCT database

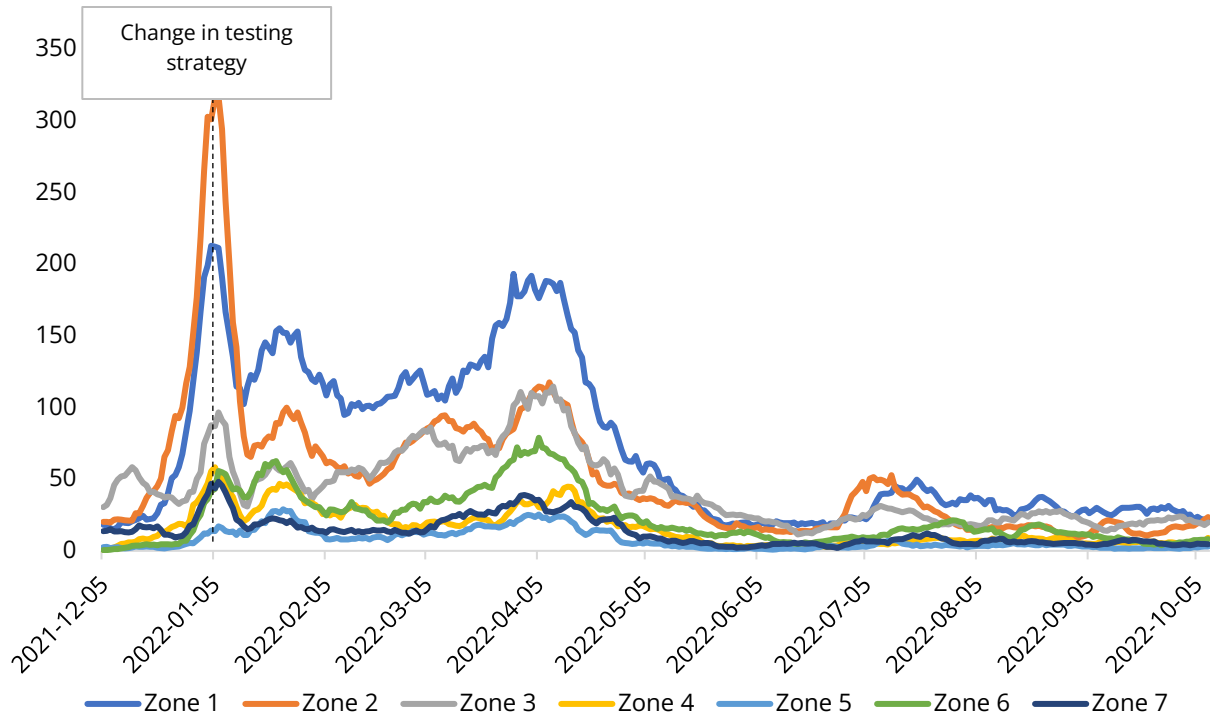
<sup>5</sup> Status as of 11:59pm on Saturday, October 8, 2022



**Figure 1:** Seven-day moving average of PCR confirmed COVID-19 cases by report date from December 5, 2021, to October 8, 2022.



**Figure 2:** Seven-day moving average of PCR confirmed COVID-19 cases by zone and report date from December 5, 2021, to October 8, 2022.



**Table 3:** Demographics of PCR confirmed COVID-19 cases in New Brunswick by reporting week, current and previous, and cumulative, up to October 8, 2022.

Age range	Current Reporting Week		Previous Reporting Week		Cumulative	
	Number	Percent	Number	Percent	Number	Percent
< 10 years old	14	2.2%	16	2.7%	4609	5.9%
10 - 19 years old	8	1.3%	11	1.8%	4353	5.5%
20 - 29 years old	56	8.9%	55	9.2%	10658	13.5%
30 - 39 years old	63	10.0%	90	15.1%	11386	14.5%
40 - 49 years old	75	11.9%	77	12.9%	11004	14.0%
50 - 59 years old	115	18.2%	104	17.4%	13567	17.2%
60 - 69 years old	112	17.7%	85	14.3%	9954	12.7%
70 - 79 years old	102	16.2%	77	12.9%	6551	8.3%
80 - 89 years old	59	9.4%	57	9.6%	4600	5.8%
90+ years old	27	4.3%	24	4.0%	2005	2.5%
<b>Total</b>	<b>631</b>	<b>100.0%</b>	<b>596</b>	<b>100.0%</b>	<b>78687</b>	<b>100.0%</b>
Vaccination status <sup>6</sup>	Number	Percent	Number	Percent	Number <sup>7</sup>	Percent
<b>Protected</b>	452	71.6%	426	71.5%	45581	65.2%
<b>Unprotected</b>	179	28.4%	170	28.5%	24335	34.8%
<b>Total</b>	<b>631</b>	<b>100.0%</b>	<b>596</b>	<b>100.0%</b>	<b>69916</b>	<b>100.0%</b>

<sup>6</sup>Protected refers to boosted or fully vaccinated less than six months. Unprotected refers to fully vaccinated more than six months, partially vaccinated, and unvaccinated. The protected definition does not include individuals with protection from a previous infection. The definitions of “protected” and “unprotected” are currently under review.

<sup>7</sup>Cases reported since December 5, 2021.

## COVID-19 HOSPITALIZATIONS<sup>8</sup> AND DEATH<sup>9</sup> SURVEILLANCE

**Table 4:** Hospitalizations for COVID-19 in New Brunswick, by age groups for reporting week, previous and current, and cumulative (Data up to October 8, 2022).

Age range	Total admissions (non-ICU and ICU)			ICU admissions			Resolved or discharg- ed	Deceased <sup>10</sup>
	Current reporting week	Previous reporting week	Cumulative	Current reporting week	Previous reporting week	Cumulative	Cumulative	Cumulative
< 10 years old	1	1	48	0	0	1	48	0
10 - 19 years old	0	0	16	0	0	1	16	0
20 - 29 years old	0	0	44	0	0	13	41	3
30 - 39 years old	1	1	54	0	0	12	48	5
40 - 49 years old	0	0	118	0	0	42	110	14
50 - 59 years old	2	0	207	0	0	63	193	22
60 - 69 years old	7	5	340	1	0	97	314	56
70 - 79 years old	9	6	462	1	0	105	397	153
80 - 89 years old	7	4	371	0	0	42	308	180
90+ years old	0	2	151	0	0	10	110	139
<b>Total</b>	<b>27</b>	<b>19</b>	<b>1811</b>	<b>2</b>	<b>0</b>	<b>386</b>	<b>1585</b>	<b>572</b>

<sup>8</sup> Hospitalizations (including ICU admissions) are individuals that are hospitalized for COVID-19.

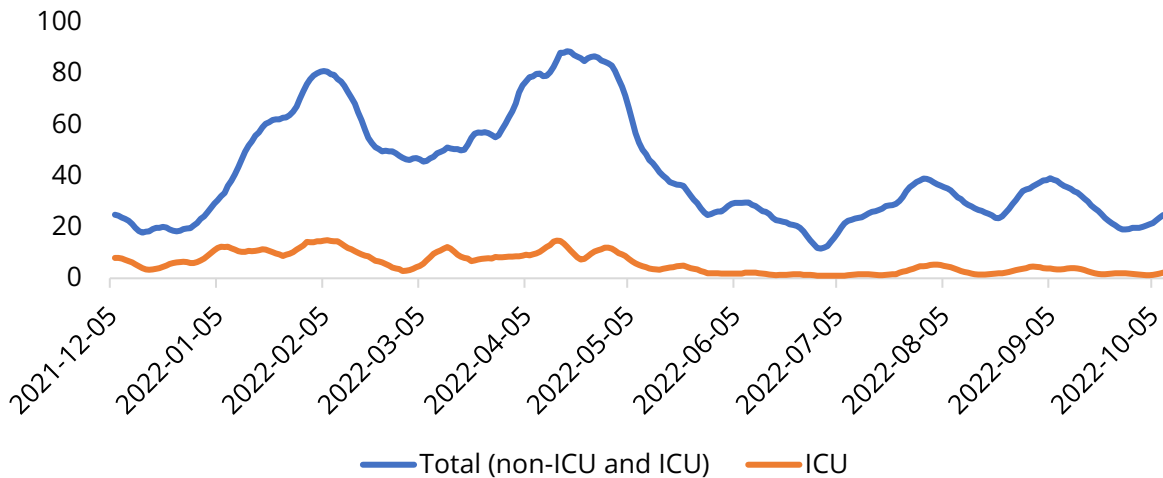
<sup>9</sup> Deaths are those where COVID-19 was a primary or contributing factor to cause of death as per the attending physician.

<sup>10</sup> Deceased cases reported within and outside of hospital.

**Table 5:** Vaccination status, proportion, and rate per 100,000 for hospitalized and deceased cases reported since December 5, 2021 (week 49).

Vaccination status <sup>11</sup>	Hospitalizations (non-ICU and ICU)			ICU			Deceased		
	N	%	Rate per 100,000	N	%	Rate per 100,000	N	%	Rate per 100,000
Protected	835	54.9%	205.4	106	41.7%	26.1	263	62.0%	64.7
Unprotected	686	45.1%	199.3	148	58.3%	43.0	161	38.0%	46.8
<b>Total</b>	<b>1521</b>	<b>100.0%</b>	<b>202.6</b>	<b>254</b>	<b>100.0%</b>	<b>33.8</b>	<b>424</b>	<b>100.0%</b>	<b>56.5</b>

**Figure 3:** Seven-day moving average of hospitalizations for COVID-19 since December 5, 2021 (week 49).



<sup>11</sup>Protected refers to boosted or fully vaccinated less than six months. Unprotected refers to fully vaccinated more than six months, partially vaccinated, and unvaccinated. The protected definition does not include individuals with protection from a previous infection. The definitions of “protected” and “unprotected” are currently under review.



# National and International COVID-19 Activity

## CANADA

- National data are showing an uptick in cases.
- Deaths continue to decline over the last few months, while individual P/Ts are showing varying trends. Data from the most recent week are not available.

## INTERNATIONAL

- Maine cases are showing a slow and slight upward trend; currently at a 276 7-day average, which is higher than the 7-day averages demonstrated over the last few months.
- Global case counts have declined slightly after a few weeks of stable case counts. There were roughly 2.7 million cases last week.
  - Please note, case and death data for the Regions of the Americas and Africa are incomplete and will be updated as data is collected.
  - All regions continue to show decreasing or stable case counts, except for Europe, which is showing a decrease following a period of increasing counts. Data are incomplete and may change as additional cases are reported.
  - Germany and China have the two highest new case counts in the last 7 days, followed by France, Italy, and Japan.
    - China is implementing new restrictions in light of a surge of cases reaching concerning levels.
- Global deaths continue to decrease since the previous reporting period.
- Over 200 countries have reported Omicron cases.
  - Both BA.4 and BA.5 sub-variants have been detected in Canada.