



COVID-19 Report

**REPORTING PERIOD:
SEPTEMBER 11 TO SEPTEMBER 17, 2022
(WEEK 37)**

September 21
Department of Health





SUMMARY

n = 586 New PCR confirmed cases ¹	n = 4 Deaths ¹	n = 75579 Cases are resolved	n = 843 Cases are active ²
--	-------------------------------------	--	---

n = 21 Current hospitalizations ^{2,3} (non-ICU and ICU)	n = 2 Current ICU ^{2,3}	n = 28 Seven-day moving average (hospitalizations)	n = 84 Seven-day moving average (cases)
---	--	---	--

HIGHLIGHTS

- The number of PCR confirmed cases has remained stable this week compared to last week.
- The number of hospital admissions for COVID-19 has decreased (21) this week compared to last week (23).
- The number of active hospitalizations has decreased this week (21) compared to last week (35).
- The number of deaths has remained stable this week compared to last week (4).
- The highest portion of hospitalizations for COVID-19 is among individuals aged 70-89.
- Individuals that are unprotected by vaccine continue to have the highest rate of COVID-19 ICU admissions.
- Amongst the most recent random sample sequenced for COVID-19:
 - 0% of samples are BA.1.
 - 1% of samples are BA.2.
 - 0% of samples are BA.3.
 - 6% of samples are BA.4.
 - 93% of samples are BA.5.

¹ Reported during Sunday, September 11 to Saturday, September 17, 2022 (week 37).

² Status as of 11:59pm on Saturday, September 17, 2022.

³ Confirmed cases hospitalized for COVID-19.

COVID-19 LABORATORY DATA⁴

Table 1: The total number of PCR (polymerase chain reaction) and positive self-reported POCT (point of care) tests performed for COVID-19 by zone.

Zone	PCR Tests (Change)	Positive POCT (Change)
Zone 1	332033 (+1014)	25024 (+170)
Zone 2	161189 (+1130)	18435 (+116)
Zone 3	174056 (+1028)	18452 (+148)
Zone 4	84743 (+248)	4229 (+23)
Zone 5	47404 (+156)	1859 (+8)
Zone 6	69685 (+371)	7094 (+22)
Zone 7	42068 (+316)	3632 (+18)
Total	911178 (+4263)	78725 (+505)

Table 2: Total number of PCR confirmed COVID-19 cases.

Zone	Current reporting week	Cumulative confirmed	Number of resolved	Number of deceased	Number of active ⁵	Seven-day moving average
Zone 1	212	24053	23646	129	278	30
Zone 2	85	17116	16864	86	166	12
Zone 3	133	14605	14356	80	169	19
Zone 4	42	6234	6105	67	62	6
Zone 5	12	3057	3008	32	17	2
Zone 6	48	7269	7142	52	75	7
Zone 7	54	4568	4458	34	76	8
Total	586	76902	75579	480	843	84

⁴ Source: George Dumont Laboratory extracts and self-reported POCT database

⁵ Status as of 11:59pm on Saturday, September 17, 2022



Figure 1: Seven-day moving average of PCR confirmed COVID-19 cases by report date from December 5, 2021, to September 17, 2022.

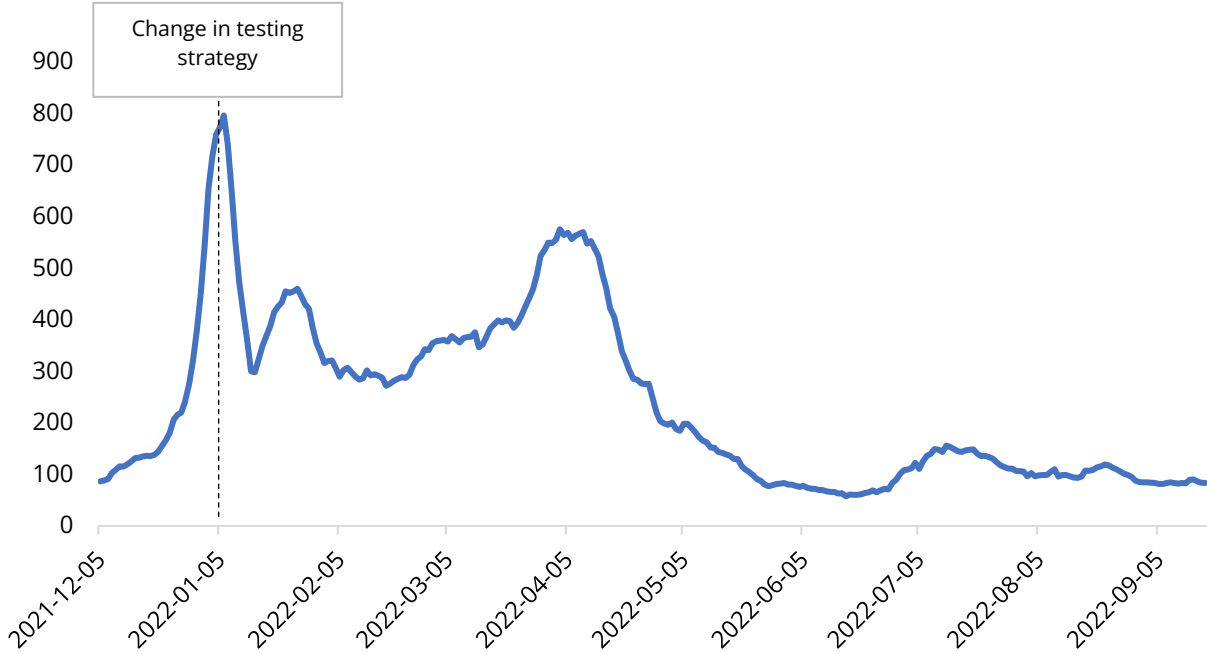


Figure 2: Seven-day moving average of PCR confirmed COVID-19 cases by zone and report date from December 5, 2021, to September 17, 2022.

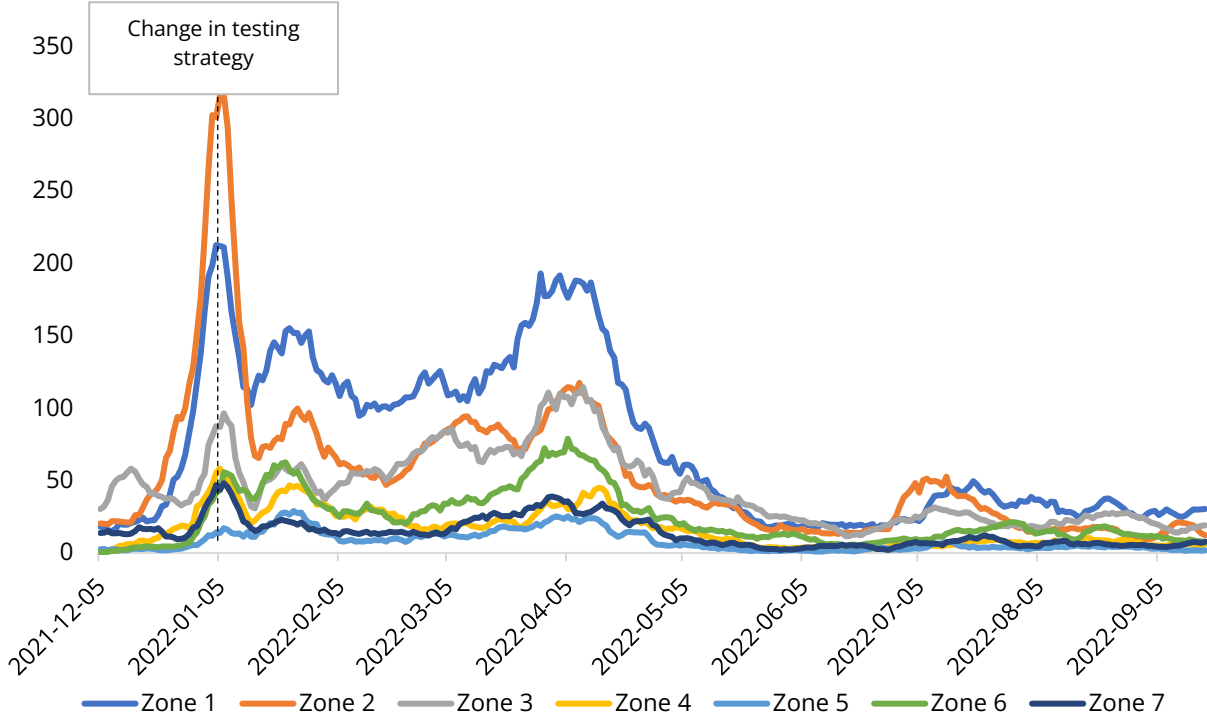


Table 3: Demographics of PCR confirmed COVID-19 cases in New Brunswick by reporting week, current and previous, and cumulative, up to September 17, 2022.

Age range	Current Reporting Week		Previous Reporting Week		Cumulative	
	Number	Percent	Number	Percent	Number	Percent
< 10 years old	14	2.4%	8	1.4%	4569	5.9%
10 - 19 years old	10	1.7%	8	1.4%	4329	5.6%
20 - 29 years old	52	8.9%	70	12.2%	10502	13.7%
30 - 39 years old	72	12.3%	74	12.9%	11153	14.5%
40 - 49 years old	90	15.4%	79	13.7%	10767	14.0%
50 - 59 years old	97	16.6%	104	18.1%	13248	17.2%
60 - 69 years old	85	14.5%	73	12.7%	9657	12.6%
70 - 79 years old	80	13.7%	81	14.1%	6303	8.2%
80 - 89 years old	53	9.0%	54	9.4%	4436	5.8%
90+ years old	33	5.6%	24	4.2%	1938	2.5%
Total	586	100.0%	575	100.0%	76902	100.0%
Vaccination status ⁶	Number	Percent	Number	Percent	Number ⁷	Percent
Protected	416	71.0%	423	73.6%	44299	65.0%
Unprotected	170	29.0%	152	26.4%	23832	35.0%
Total	586	100.0%	575	100.0%	68131	100.0%

⁶Protected refers to boosted or fully vaccinated less than six months. Unprotected refers to fully vaccinated more than six months, partially vaccinated, and unvaccinated. The protected definition does not include individuals with protection from a previous infection. The definitions of “protected” and “unprotected” are currently under review.

⁷Cases reported since December 5, 2021.

COVID-19 HOSPITALIZATIONS⁸ AND DEATH⁹ SURVEILLANCE

Table 4: Hospitalizations for COVID-19 in New Brunswick, by age groups for reporting week, previous and current, and cumulative (Data up to September 17, 2022).

Age range	Total admissions (non-ICU and ICU)			ICU admissions			Resolved or discharg- ed	Deceased ¹⁰
	Current reporting week	Previous reporting week	Cumulative	Current reporting week	Previous reporting week	Cumulative	Cumulative	Cumulative
< 10 years old	0	0	45	0	0	1	45	0
10 - 19 years old	0	0	15	0	0	1	15	0
20 - 29 years old	0	1	44	0	1	13	42	2
30 - 39 years old	0	1	51	0	0	12	46	4
40 - 49 years old	0	3	118	0	1	42	109	15
50 - 59 years old	1	1	204	0	0	62	193	22
60 - 69 years old	2	3	325	0	0	96	302	49
70 - 79 years old	10	5	444	0	0	103	376	131
80 - 89 years old	6	7	354	0	0	42	300	156
90+ years old	2	2	147	0	0	9	108	101
Total	21	23	1747	0	2	381	1536	480

⁸ Hospitalizations (including ICU admissions) are individuals that are hospitalized for COVID-19.

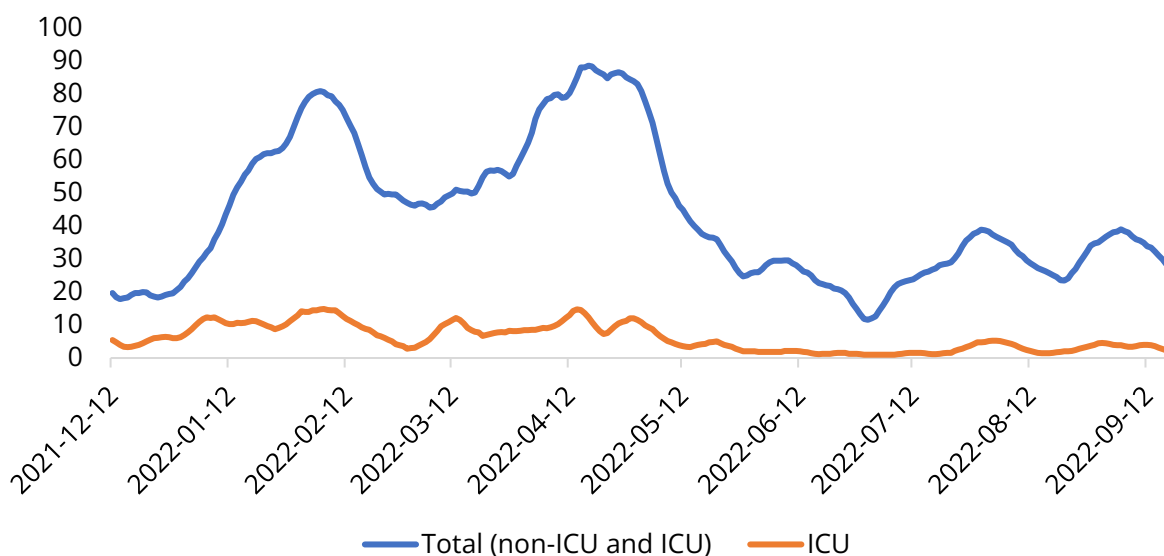
⁹ Deaths are those where COVID-19 was a primary or contributing factor to cause of death as per the attending physician.

¹⁰ Deceased cases reported within and outside of hospital.

Table 5: Vaccination status, proportion, and rate per 100,000 for hospitalized and deceased cases reported since December 5, 2021 (week 49).

Vaccination status ¹¹	Hospitalizations (non-ICU and ICU)			ICU			Deceased		
	N	%	Rate per 100,000	N	%	Rate per 100,000	N	%	Rate per 100,000
Protected	791	54.3%	194.6	103	41.4%	25.3	196	59.0%	48.2
Unprotected	666	45.7%	193.5	146	58.6%	42.4	136	41.0%	39.5
Total	1457	100.0%	194.1	249	100.0%	33.2	332	100.0%	44.2

Figure 3: Seven-day moving average of hospitalizations for COVID-19 since December 5, 2021 (week 49).



¹¹Protected refers to boosted or fully vaccinated less than six months. Unprotected refers to fully vaccinated more than six months, partially vaccinated, and unvaccinated. The protected definition does not include individuals with protection from a previous infection. The definitions of “protected” and “unprotected” are currently under review.



National and International COVID-19 Activity

CANADA

- National data continue a downward trend; all provinces and territories are showing decreasing or stable counts. Data are delayed for some provinces and territories.
- The most recent data are continuing to demonstrate a decline in deaths over the last few months, while individual provinces and territories are showing varying trends.

INTERNATIONAL

- Maine cases have remained stable over the past month; currently at a 241 7-day average.
- Global case counts continue to decline and remain at similar counts to those reported in May 2022. There were roughly 3.0 million cases last week.
 - Please note, case and death data for the Regions of the Americas and Africa are incomplete and will be updated as data is collected.
 - All regions continue to show decreasing case counts. Data are incomplete and may change as additional cases are reported.
 - Japan and Russia have the two highest new case counts in the last 7 days, followed by Republic of Korea, China, and the United States.
- Global deaths continue to decrease.
- Over 200 countries have reported Omicron cases.
 - Both BA.4 and BA.5 sub-variants have been detected in Canada.